

## Property Details

Location	Town of Guilderland, Albany County, NY
Year Built	1978
Average Floor Plate	26,000 square feet
HVAC System	Multi-zone unit system
Telecommunications	Multiple fiber optic providers
Parking	Ample parking included in rent
Elevator	2 passenger, 1 freight
Fire Protection Service	Sprinkler system
Security	Card access system
Loading Dock	1 Bay loading dock
After Hours HVAC Controls	EMS System
Specialties	Café on premises

**ENERGY STAR**  
Certified



For a business address with the right combination of location and prestige, consider 1450 Western Avenue. Located strategically near I-87 and I-90, it is minutes from shopping, restaurants and residential neighborhoods. A five-story steel and glass curtain wall is a striking exterior feature. 26,000 square feet of office space on each floor accommodates a variety of floor plans. Recent renovations include installation of new lighting and HVAC systems. 1450 Western Avenue provides a full-time superintendent on site as well as ample parking in beautifully landscaped, well-lit adjacent parking areas.

### Contact

**William Picotte**  
Wpicotte@picotte.com

**Tim McGuire**  
Tmcguire@picotte.com

**518.465.4747**

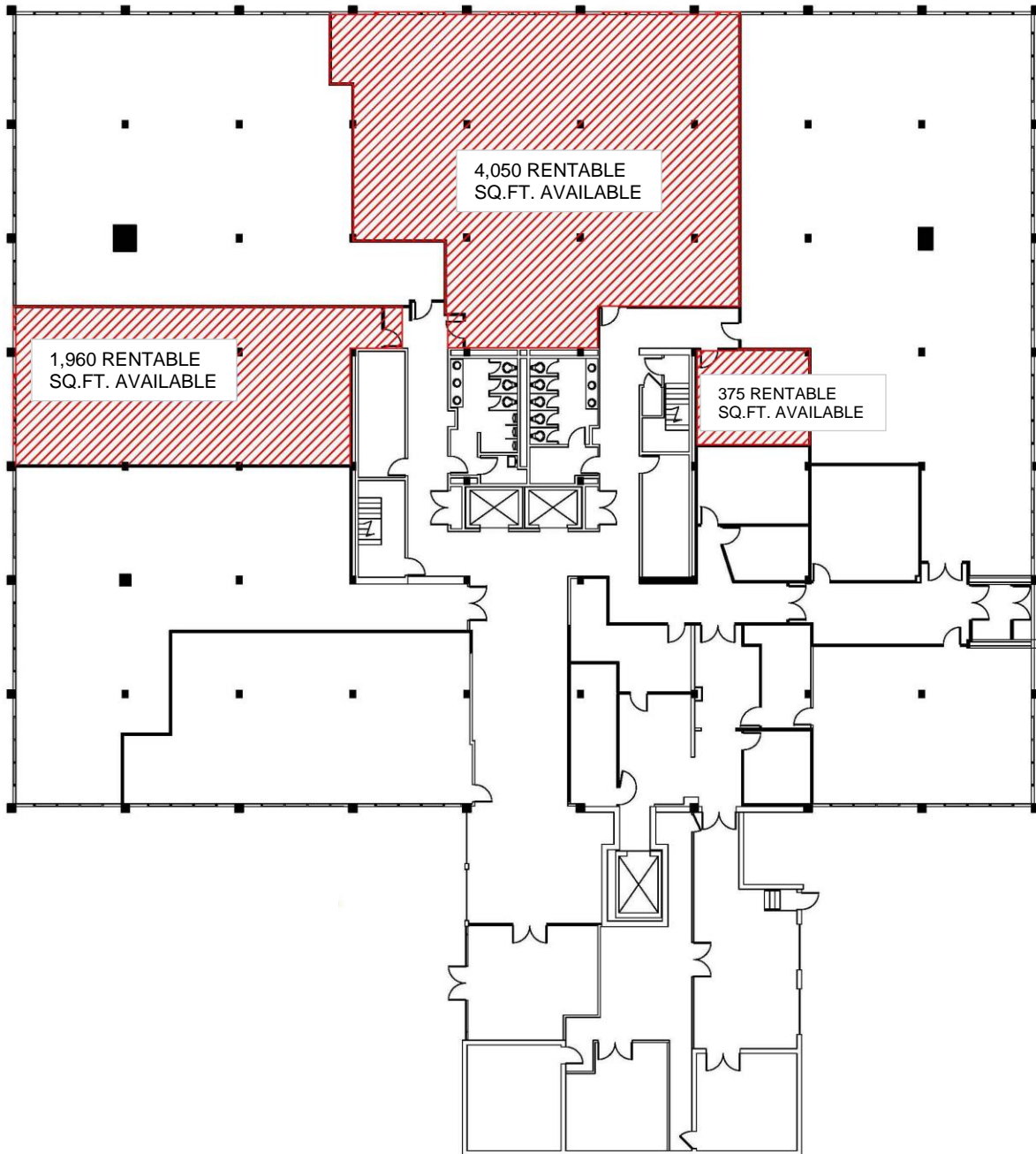
# Property Floor Plan

1450 Western Avenue

Albany, NY 12211

**FIRST FLOOR**

**MULTIPLE SPACE AVAILABLE**



# Property Floor Plan

1450 Western Avenue

Albany, NY 12211

**THIRD FLOOR**

**2,778 RENTABLE SQ FEET**

